

RPL13 antibody - C-terminal region
Rabbit Polyclonal Antibody
Catalog # AI11704**Specification**

RPL13 antibody - C-terminal region - Product Information

| | |
|-------------------|--|
| Application | WB, IHC |
| Primary Accession | P26373 |
| Other Accession | NM_000977 , NP_000968 |
| Reactivity | Human, Mouse, Rat, Rabbit, Zebrafish, Horse, Bovine, Dog |
| Predicted Host | Human, Mouse, Bovine, Dog |
| Clonality | Rabbit |
| Calculated MW | Polyclonal 24kDa KDa |

RPL13 antibody - C-terminal region - Additional Information**Gene ID 6137**

| | |
|--------------|---|
| Alias Symbol | BBC1, D16S444E, FLJ27453, FLJ27454, MGC117342, MGC71373, L13, D16S44E |
|--------------|---|

Other Names

60S ribosomal protein L13, Breast basic conserved protein 1, RPL13, BBC1

Format

Liquid. Purified antibody supplied in 1x PBS buffer with 0.09% (w/v) sodium azide and 2% sucrose.

Reconstitution & Storage

Add 50 ul of distilled water. Final anti-RPL13 antibody concentration is 1 mg/ml in PBS buffer with 2% sucrose. For longer periods of storage, store at 20°C. Avoid repeat freeze-thaw cycles.

Precautions

RPL13 antibody - C-terminal region is for research use only and not for use in diagnostic or therapeutic procedures.

RPL13 antibody - C-terminal region - Protein Information**Name RPL13****Synonyms BBC1****Function**

Component of the ribosome, a large ribonucleoprotein complex responsible for the synthesis of proteins in the cell (PubMed: <http://www.uniprot.org/citations/23636399> target="_blank">23636399, PubMed: <http://www.uniprot.org/citations/31630789> target="_blank">31630789, PubMed: <http://www.uniprot.org/citations/32669547> target="_blank">32669547). The small ribosomal subunit (SSU) binds messenger RNAs

(mRNAs) and translates the encoded message by selecting cognate aminoacyl-transfer RNA (tRNA) molecules (Probable). The large subunit (LSU) contains the ribosomal catalytic site termed the peptidyl transferase center (PTC), which catalyzes the formation of peptide bonds, thereby polymerizing the amino acids delivered by tRNAs into a polypeptide chain (Probable). The nascent polypeptides leave the ribosome through a tunnel in the LSU and interact with protein factors that function in enzymatic processing, targeting, and the membrane insertion of nascent chains at the exit of the ribosomal tunnel (Probable). As part of the LSU, it is probably required for its formation and the maturation of rRNAs (PubMed:31630789). Plays a role in bone development (PubMed:31630789).

Cellular Location

Cytoplasm

Tissue Location

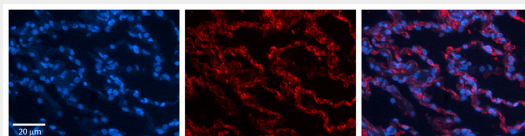
Higher levels of expression in benign breast lesions than in carcinomas.

RPL13 antibody - C-terminal region - Protocols

Provided below are standard protocols that you may find useful for product applications.

- [Western Blot](#)
- [Blocking Peptides](#)
- [Dot Blot](#)
- [Immunohistochemistry](#)
- [Immunofluorescence](#)
- [Immunoprecipitation](#)
- [Flow Cytometry](#)
- [Cell Culture](#)

RPL13 antibody - C-terminal region - Images



Rabbit Anti-RPL13 Antibody

Catalog Number: AI11704

Formalin Fixed Paraffin Embedded Tissue: Human Lung Tissue Observed Staining: Cytoplasmic in alveolar mostly type I cells

Primary Antibody

Concentration: 1:100 Other Working Concentrations: 1/600

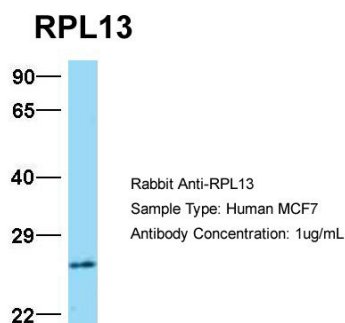
Secondary Antibody: Donkey anti-Rabbit-Cy3

Secondary Antibody

Concentration: 1:200

Magnification: 20X

Exposure Time: 0.5 - 2.0 sec

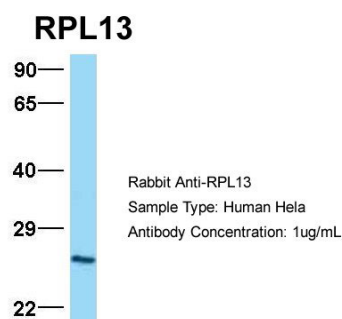


Host: Rabbit

Target Name: RPL13

Sample Tissue: MCF7

Antibody Dilution: 1.0µg/ml RPL13 is strongly supported by BioGPS gene expression data to be expressed in MCF7

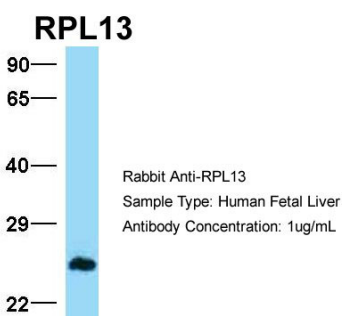


Host: Rabbit

Target Name: RPL13

Sample Tissue: HeLa

Antibody Dilution: 1.0µg/ml There is BioGPS gene expression data showing that RPL13 is expressed in HeLa

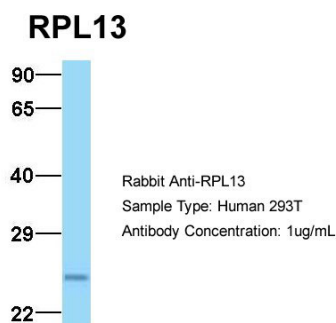


Host: Rabbit

Target Name: RPL13

Sample Tissue: Human Fetal Liver

Antibody Dilution: 1.0µg/ml

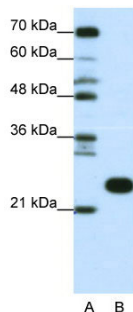


Host: Rabbit

Target Name: RPL13

Sample Tissue: 293T

Antibody Dilution: 1.0µg/ml RPL13 is strongly supported by BioGPS gene expression data to be expressed in Human HEK293T cells



WB Suggested Anti-RPL13 Antibody Titration: 0.0625µg/ml

ELISA Titer: 1:62500

Positive Control: Jurkat cell lysate

RPL13 antibody - C-terminal region - References

Bi,W., (2002) Genome Res. 12 (5), 713-728
Reconstitution and Storage: For short term use, store at 2-8C up to 1 week. For long term storage, store at -20C in small aliquots to prevent freeze-thaw cycles.
Publications: Hartl, T. A. et al. Regulation of ribosome biogenesis by nucleostemin 3 promotes local and systemic growth in Drosophila. Genetics 194, 101-15 (2013).
WB, Human, Mouse, Rat, Dog, Bovine, H, Rabbit, Guinea pig, Zebrafish 23436180